

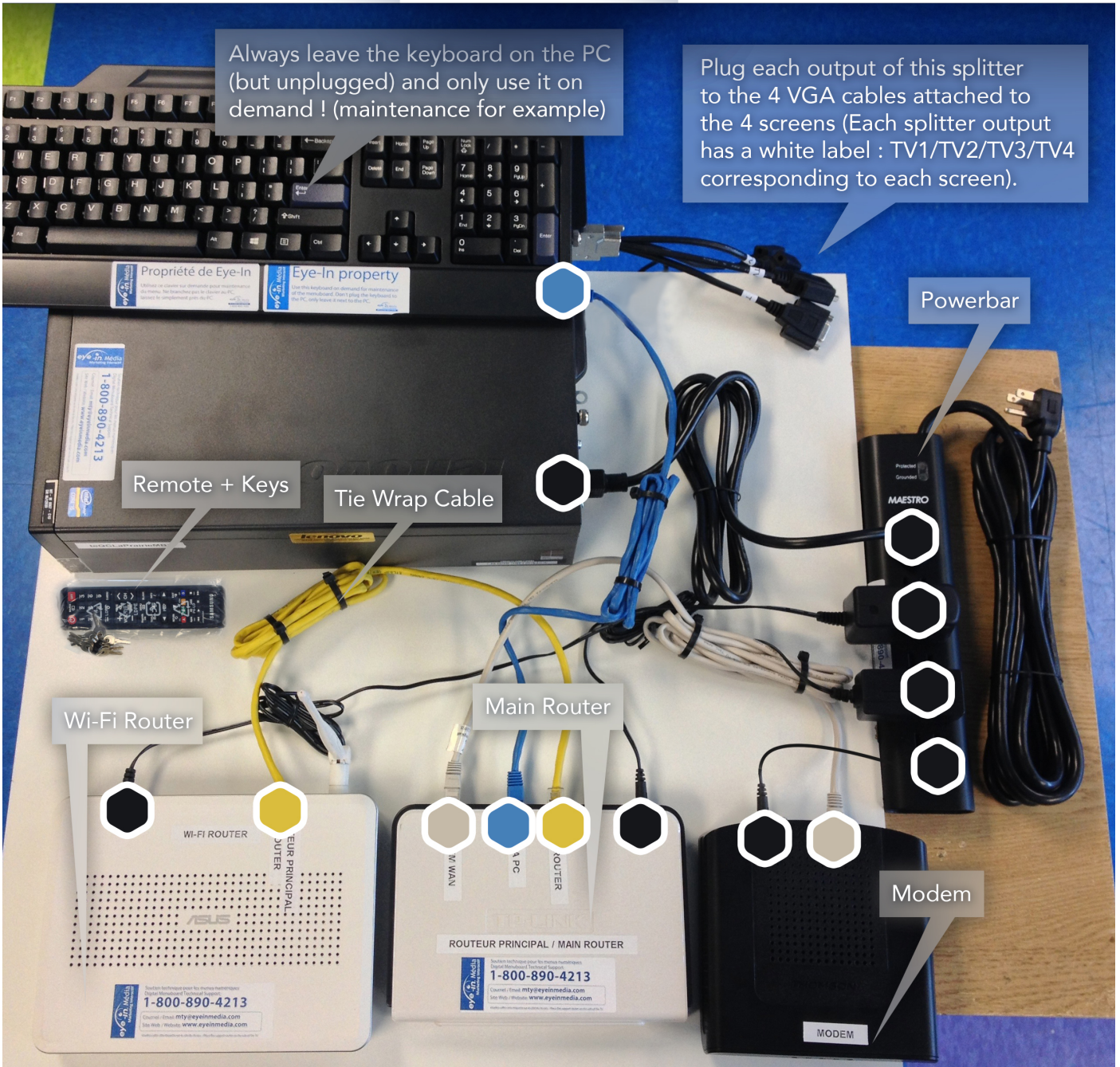
INSTALLATION KIT

PAGE 1/5

eye-in[®] Média
Interactive Marketing
Where Vision Meets Reality
1-800-890-4213

Always leave the keyboard on the PC (but unplugged) and only use it on demand ! (maintenance for example)

Plug each output of this splitter to the 4 VGA cables attached to the 4 screens (Each splitter output has a white label : TV1/TV2/TV3/TV4 corresponding to each screen).



LEGEND



Wi-Fi Router
To Main Router



Power Cables
To Powerbar



Main Router
To PC



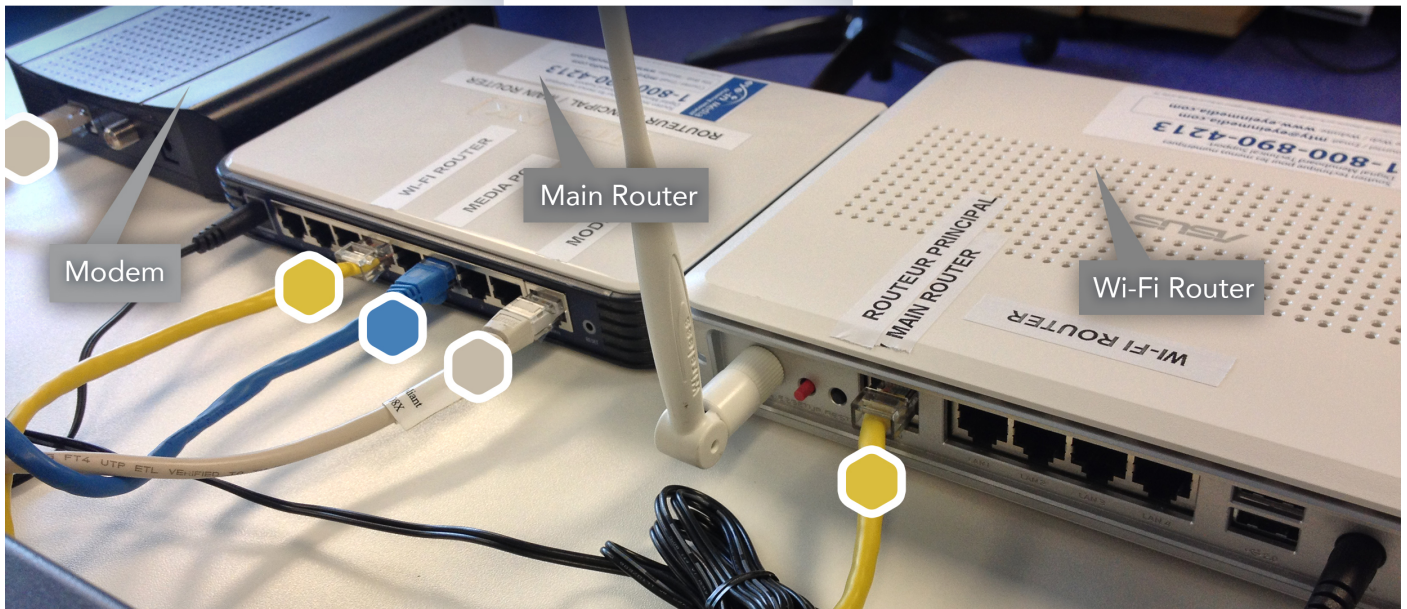
Main Router
To Modem

Please send a picture of the installation once done and call Eye-In Media (1-800-890-4213). Also mention the location of the PC (in the admin office? in the kitchen? etc.) And always tie wrap all cables, don't make a mess !




INSTALLATION KIT

PAGE
2/5

eye-in Média
Interactive Marketing
Where Vision Meets Reality
1-800-890-4213



LEGEND

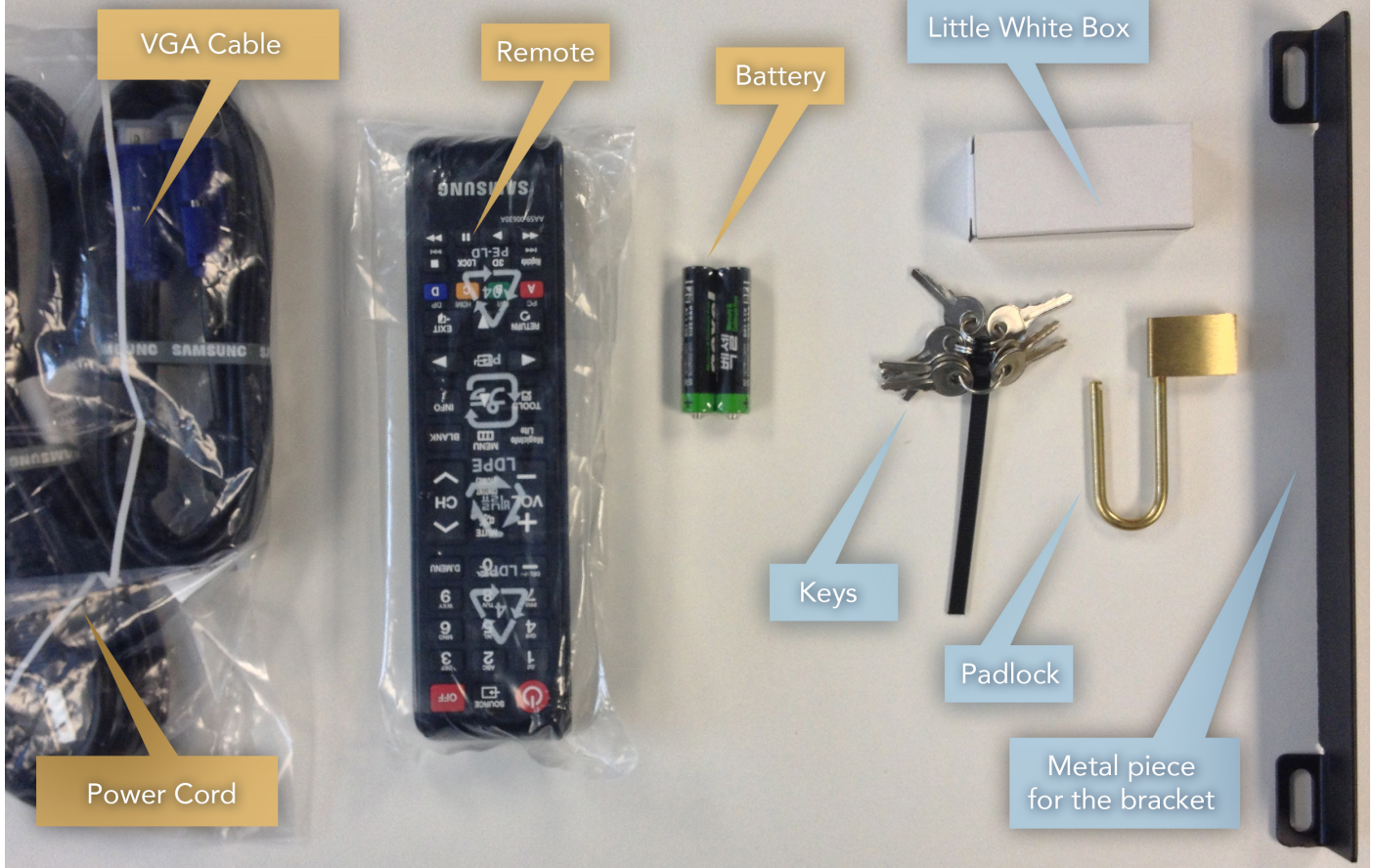
-  Wi-Fi Router To Main Router
-  Main Router To PC
-  Main Router To Modem

IMPORTANT :
When you attach the Splitter output to the VGA cable, you need to make sure that it is screwed tight.



TV BOX Content

BRACKET BOX Content



1

The remote control, the battery, the power cord and the VGA cable are in the same bag, inside the TV Box. ATTENTION : You won't use this 6 ft VGA Cable, but the longer one that we will ship you separately.

2

Put the keys in the remote's plastic bag, and put the battery in the remote. Always leave the remote bag (with the remote and keys in it) next to the PC (as seen on the previous page).

3

Find the 2 little white boxes inside the bracket box. Each white box contains a set of keys and one padlock. Open the padlock with a key and keep it open, you'll need it after.

4

Use the padlock to attach the metal piece to the bracket. It prevents the screen from slipping or falling. The keys must be stored in the remote plastic bag for future use, and placed next to the PC.

INSTALLATION KIT

PAGE 4/5

eye-in[®] Média
Interactive Marketing
Where Vision Meets Reality
1-800-890-4213

VESA 50x100 to 900x600mm SOT96

3" 42"+

MAX 165 lbs Tilt -5°+15°

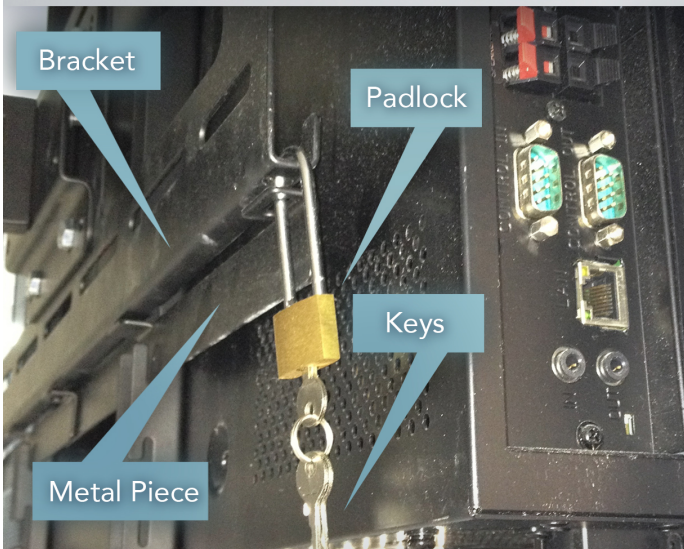
4"-24" 9" 2 1/2"-36" 38"

Optional Wall Extension SAVO See page 35 Wall Extension XW3-80-N See page 32 Ceiling Extension XC1-80-N See page 33

SOT

- Bubble Level Meter
- Two Pad Locks Included
- Two Slide Bar Security Fasteners
- Wall and Ceiling Extensions Available

UL US



- 1 As explained on the previous page, you'll need to open the padlock with the keys found in the two little white boxes that was in the bracket box.
- 2 Lock the metal piece on the bracket thanks to the padlock to prevent the screen from slipping or falling (see the picture beside).
- 3 Put the keys in the plastic bag of the remote control once the padlock opened and leave the remote next to the PC for future needs (see picture below).



